

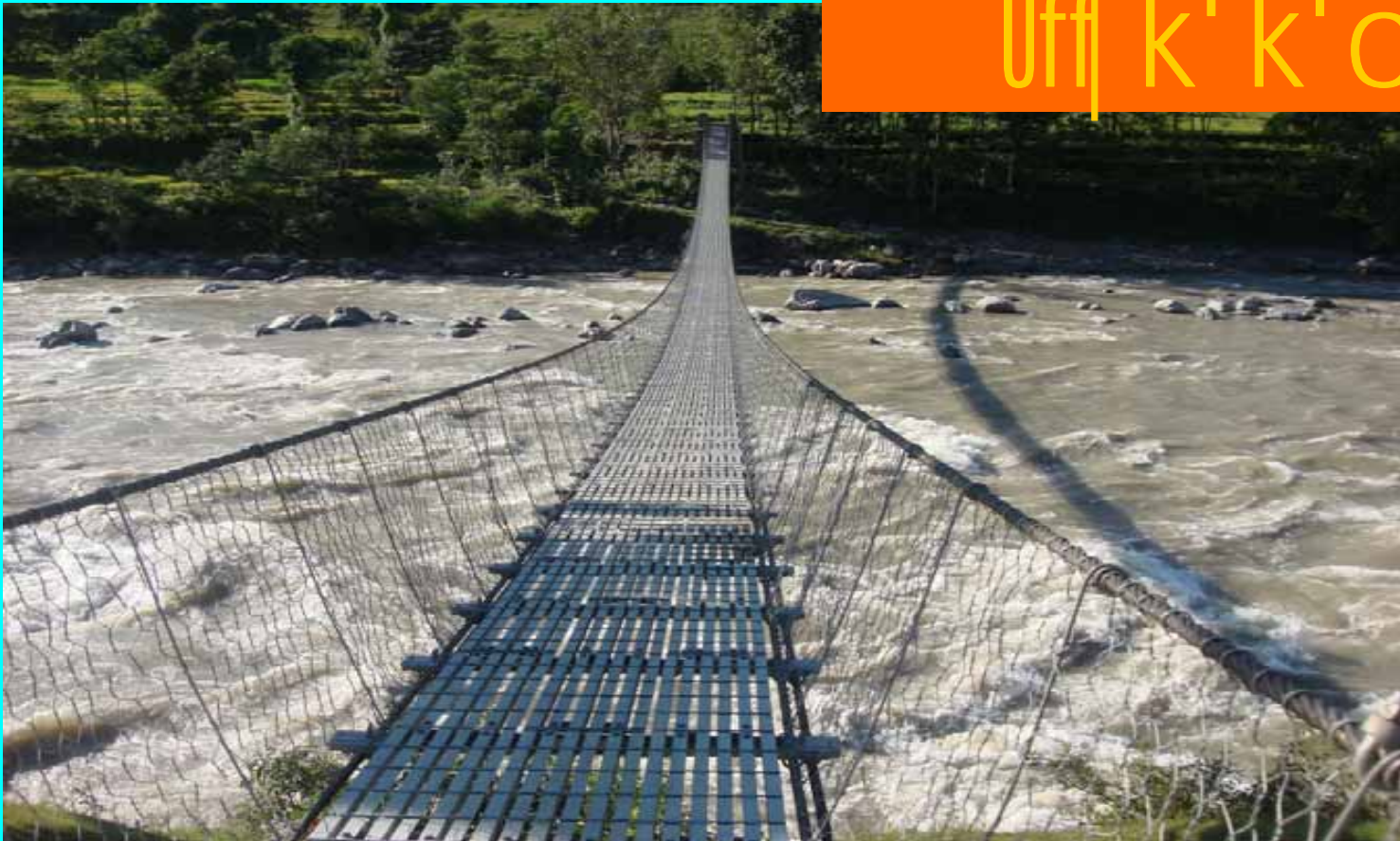
RRRSDP

website: www.rrr.gov.np

bhim@dolidar.gov.np

bhimupadhyaya@gmail.com

eld pkfWofO
pkdxflgbZS,
kl/ofhgf ; ofhs
Uffj k' k' cfofhgf



ADB, IFID, DFID, SDC Aided

Rural Reconstruction and Rehabilitation Sector Development Project (RRRSDP)

Goal

- Poverty Reduction

Objectives

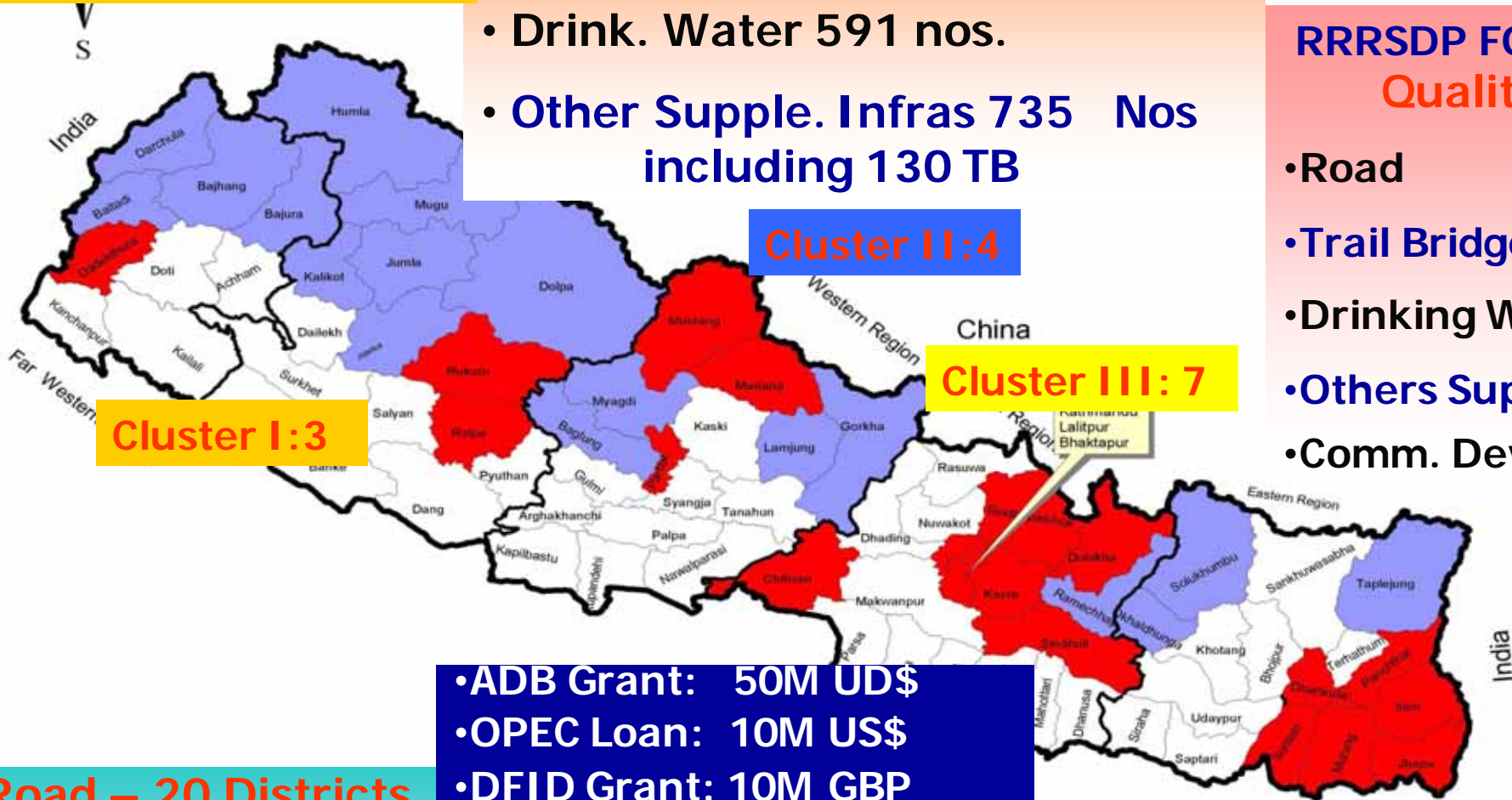
- To Improve Connectivity.
- To Enhance Economic and Employment Opportunities.
- To Increase Access to Market and Social Services for Rural Communities.

RRRSDP

- Road 859 km.
- Bridges 1319 meter.
- Drink. Water 591 nos.
- Other Supple. Infras 735 Nos including 130 TB

RRRSDP FOCUS: Quality

- Road
- Trail Bridge
- Drinking Water
- Others Supple.
- Comm. Dev.



Cluster I: 3

Cluster II: 4

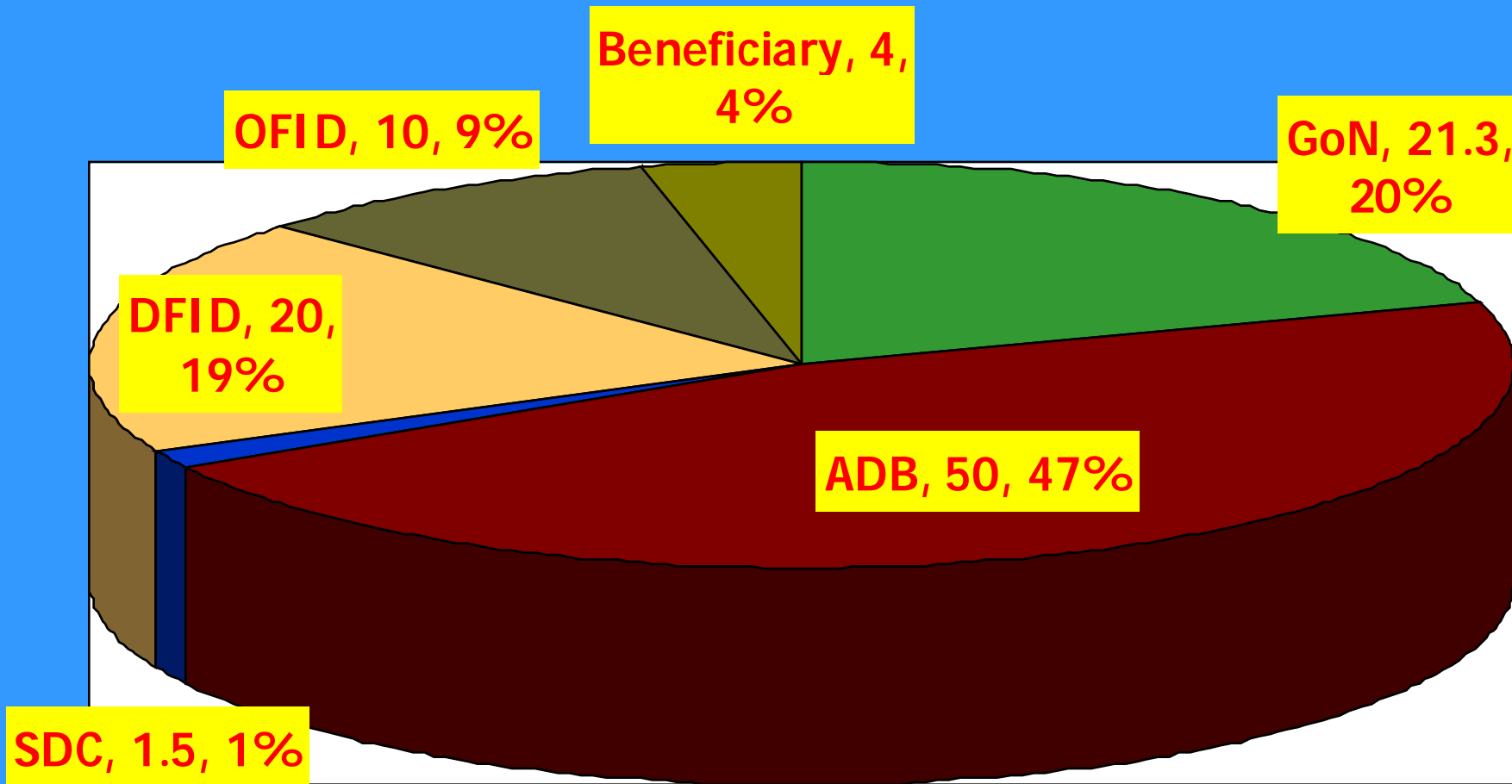
Cluster III: 7

Cluster IV: 6

- Road – 20 Districts
- DW 18 Districts
- TB 13 Districts
- Total 38 districts

- ADB Grant: 50M US\$
- OPEC Loan: 10M US\$
- DFID Grant: 10M GBP
- SDC Grant: 1.5M US\$
- GoN : 21.3M US\$
- UC: 4M US\$
- Total 106.8M US\$

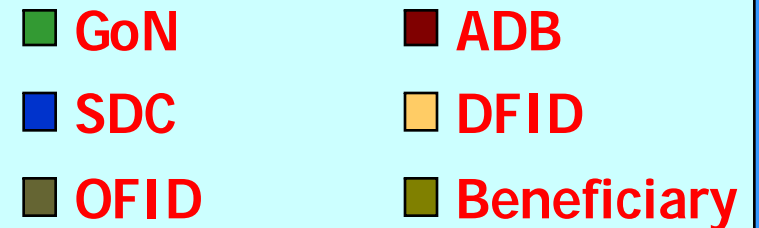
RRRSDP Budget Contribution



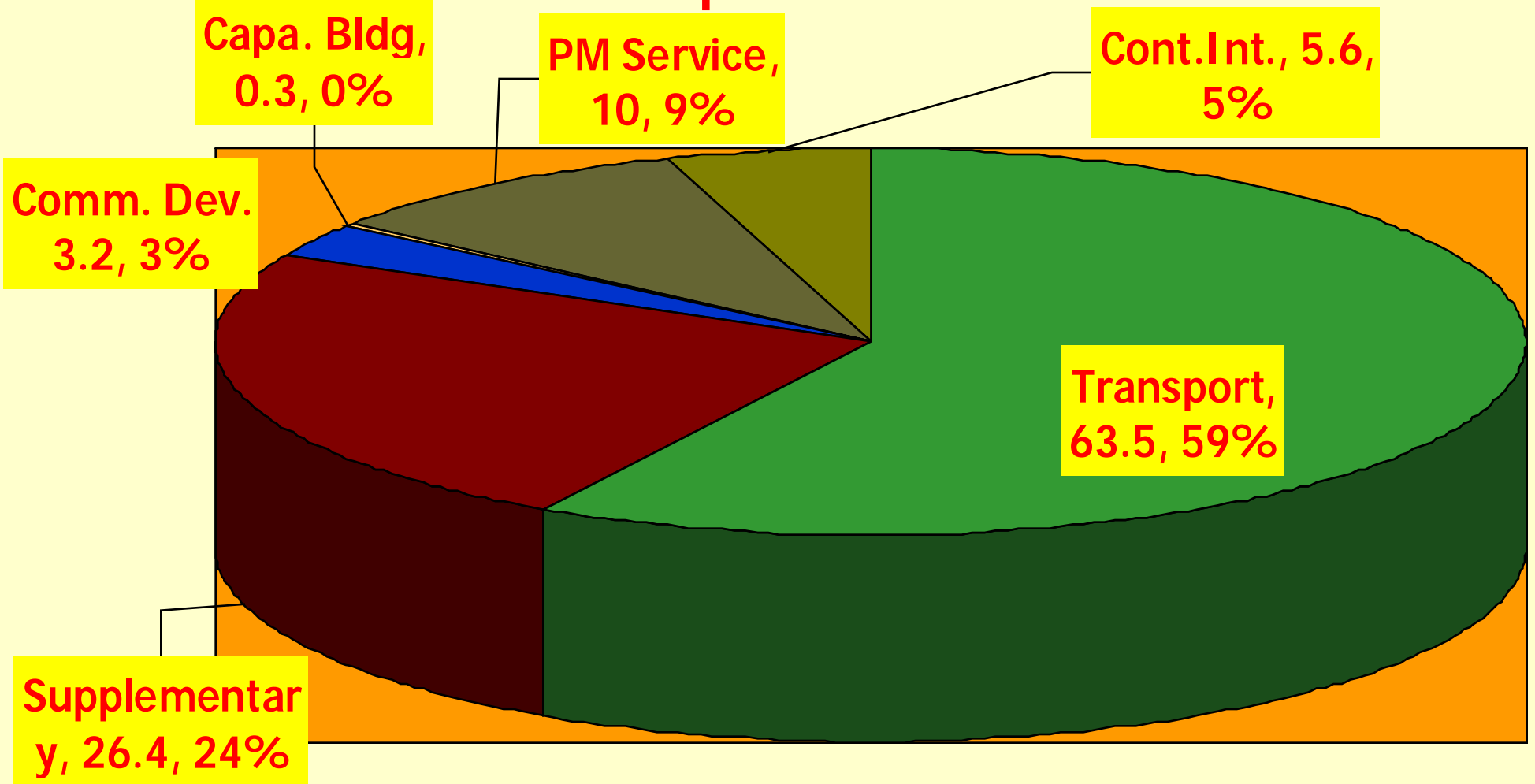
Total Project Cost USD 106.8M

Fund Utilization


DFID: Road and CISC/DIST; OFID: Road only; SDC: TB only; ADB: for ALL.



RRRSDP Component Allocation



Total Project Cost USD 106.8M

- | | |
|--|---|
|  Transport |  Supplementary |
|  Comm. Dev. |  Capa. Bldg |
|  PM Service |  Cont.Int. |

RRRSDP: Cost Contribution

- ❑ **Start Date** 2008 Jan.
- ❑ **Close Date** 2011 Dec.
- ❑ **Total Cost** 106.8 M US\$

Donors' Contribution

Consultancy Full.
Vehicles, Equipments,
Furniture & incremental Full
Infrastructure Partial
Acquisition Compensation
(ADB-80%)

GON Cost Contribution

Infrastructure, Compensation
(GoN-20%) Partial

DDC, Beneficiary Cost Contribution of Total Cost

TB: UC 2%, DDC 8%

Drinking Water UC: 20% with Min. 1% Upfront Cash

Supplementary Infras: UC 15%

Maintenance of Supplementary Infras: UC 100%

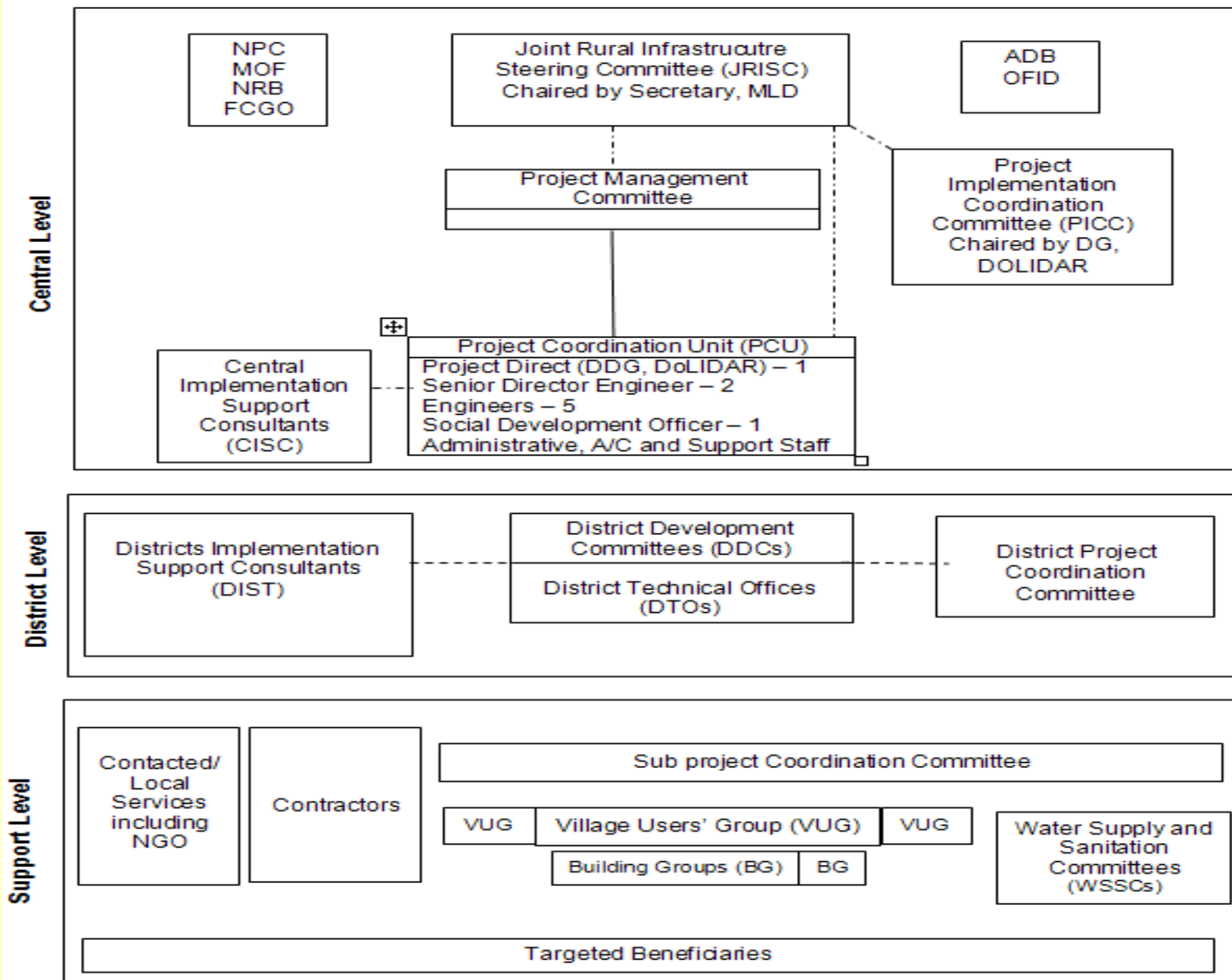
Short Span (<120m) Trail Bridge

Cost

- ADB Grant
- SDC Grant for Cable & Bulldog Grip & Technical Asst.
- Local Contribution upto 10 % of total cost.
- GoN Remaining Amount

Technical Aspect

- All Technical Design and Cost Estimate prepared thru' NGOs by DDC/DTO & is checked by TBS Unit (Helvetas).
- Construction Supervision and Quality Control is Done by NGOs.



RRRSDP Organisation

_____ Line of Command
 - - - - - Line of Coordination
 ······· Line of Advice/Policy Guidance

RRRSD Districts: 20(+18)

1. Dadeldhura
2. Rukum
3. Rolpa
4. Mustang
5. Manang
6. Parbat
7. Chitwan
8. Kathmandu
9. Lalitpur
10. Bhaktapur

Kavre
Sindhupalchok
Dolakha
Sindhuli
Morang
Sunsari
Jhapa
Ilam
Dhankuta
Panchthar

Drinking Water only (for DRILP)

Districts- 18

1. Baitadi
2. Darchula
3. Bajhang
4. Bajura
5. Humla
6. Mugu
7. Kalikot
8. Jumla
9. Dolpa

Jajarkot
Myagdi
Baglung
Gorkha
Lamjung
Ramechhap
Okhaldhuna
Solukhumbu
Taplejung

RRRSDP Stakeholders

- Expat Road Engineer/Team Leader-1
- Deputy Team Leader Engineer-1
- Road Engineer-2
- Drinking Water Expert-1
- Environmental Specialist-1
- Resettlement Expert-1
- Procurement Specialist -1
- Financial Management Expert-1
- Bridge Design Expert-1
- Regional Social Dev Coordinator-2
- Associate Consultants-3

- Project Coordinator-1
- SDE/Engineers-7
- Sociologist-1
- Survey Officer-1
- Account Officer-1

Infrastructure Components

ROAD
59%

TB Supplement-
ary

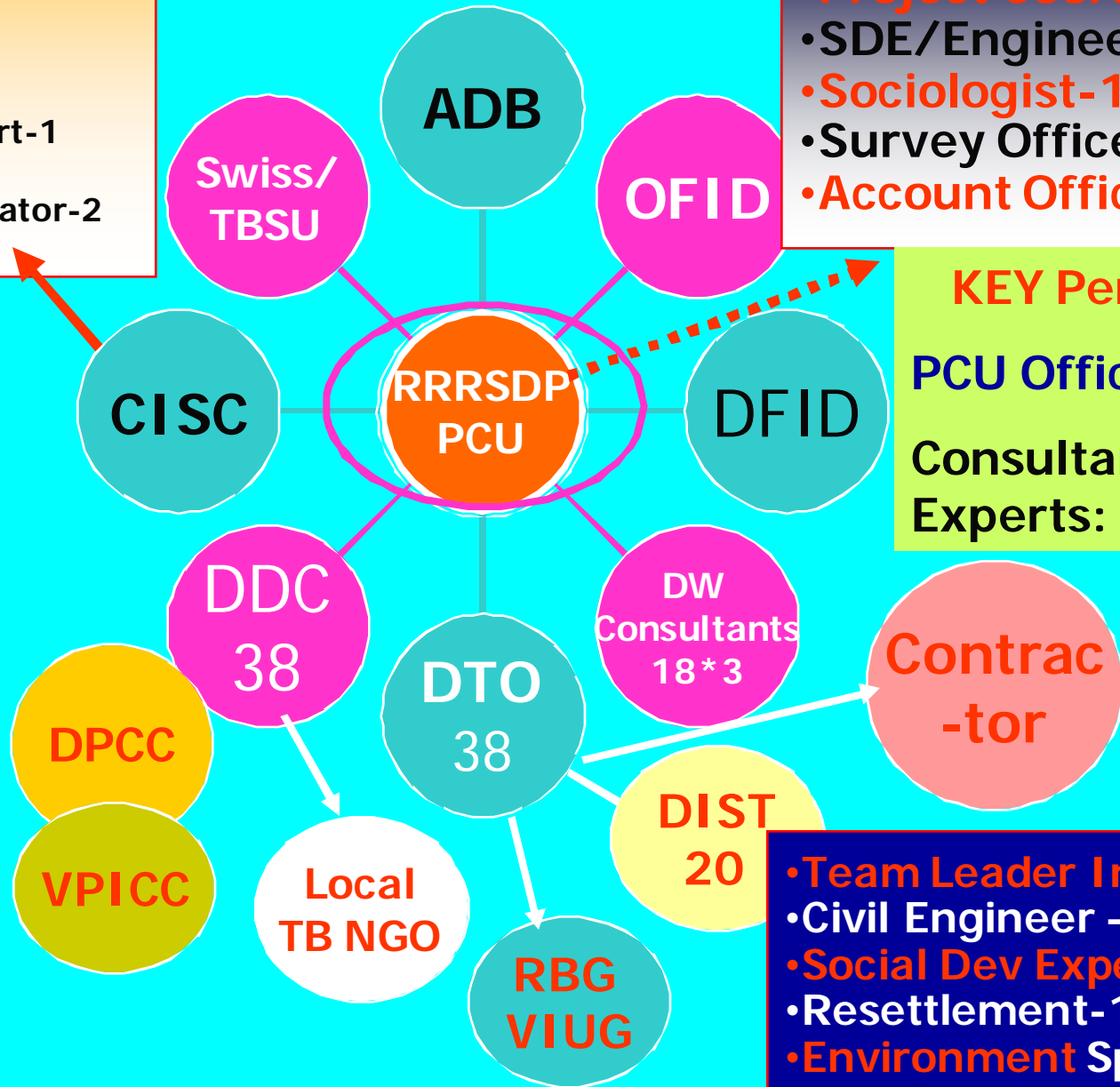
DW 24%

Others

KEY Personnel

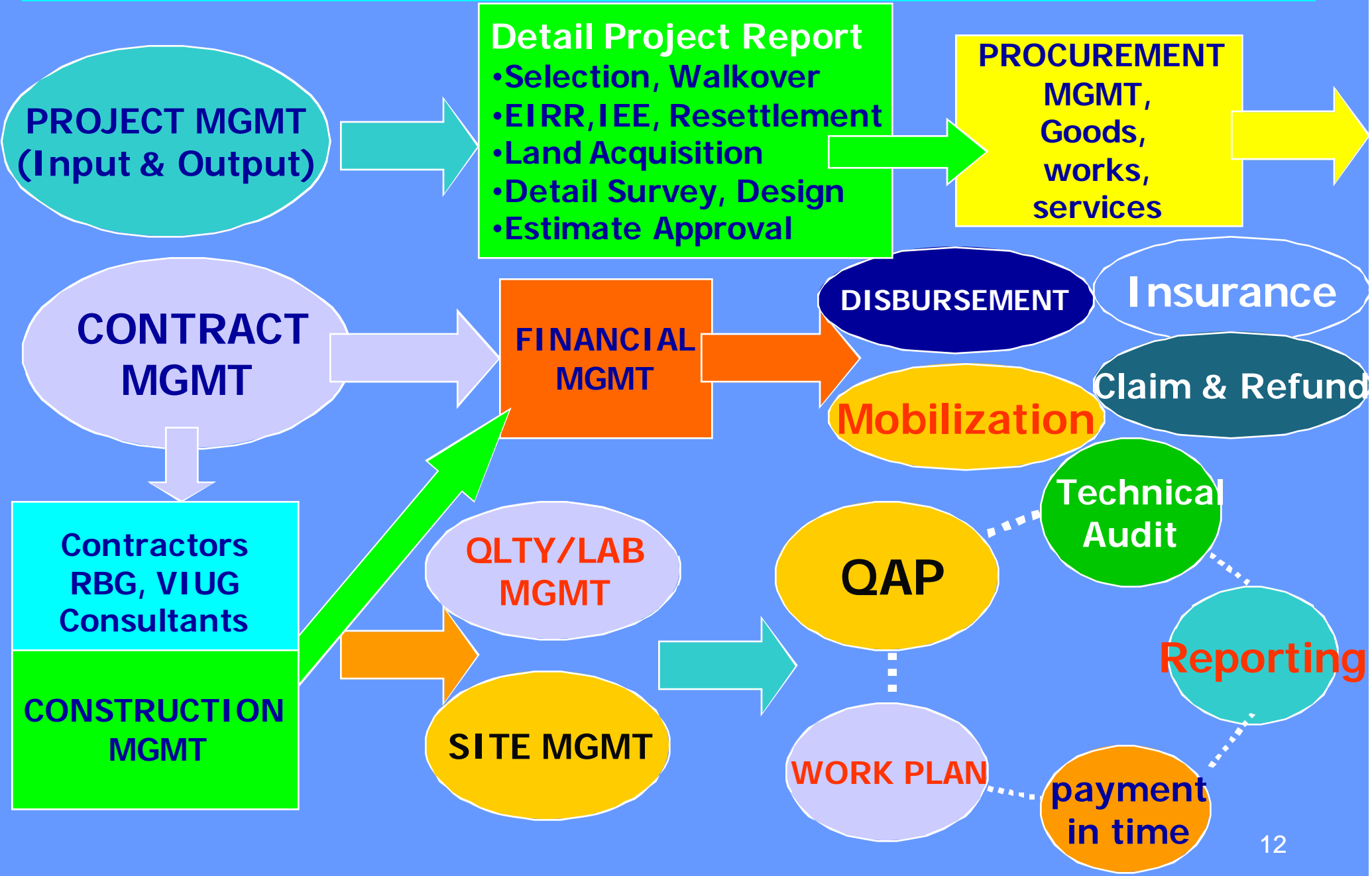
PCU Officials: 11

Consultant Experts: 100



- Team Leader Infra Engr-1
- Civil Engineer -1
- Social Dev Expert-1
- Resettlement-1
- Environment Specialist-1

RRRSD PROJECT Management System



Construction Supervision

Components

Money
(Finance,
Account)

Materials
(Site Store,
Quarry, Fuel)

Men
(Labor,
Consultants)

Machine
(Equipments,
Tools)

**Proper Engineering
Development
Administration
Culture**

Supervision of Works

**Process
(Quality
System or
control)**

**Performance
(Output)**

**Payment
(Cost
Control: direct
indirect)**

**Time
(Progress)**

Procurement

Goods

Services

Works

Poor Quality Works



Quality Works in Progress



Achievements and Challenges

Achievements

- **Intensive Training and Orientations**
- **CISC Mobilized**
- **Vehicles Procured**
- **DIST in 4 districts Mobilized, in rest of districts to be soon**
- **E gov initiatives**
- **Website Operation**
- **Newsletter Publication**

Challenges and Bottlenecks

Too Short Project Duration, Huge Budget
Too much Geographical Spread
Quick Project Selection & EIRR Feasibility
IEE TOR and Report Approval
Land Acquisition, Compensation
Resettlement Issues
Financial Authorization to DTO
Timely Budget Release to DTO
Local Political Coordination
Intensive Time-bound Follow-up and Monitoring from LDO, DDC and Centre
Procurement Issues (ADB GoN)
Estimate and Contract Approval Power related Issues i.e. DTO, LDO, DDC
Timely Financial Disbursement and Claim Reporting and Quality Control
Financial Discipline
LDO overburdened (2 Dozen projects !)
Power Delegation for Fast track Implemtn